

GENERAL NOTES

1. THESE DRAWINGS SHALL BE READ IN ACCORDANCE WITH ALL ARCHITECTURAL AND OTHER CERTIFIER OR CONSULTANTS DRAWINGS AND SPECIFICATION AND WITH ANY OTHER WRITTEN INSTRUCTION AS MAY BE ISSUED DURING THE COURSE OF THE CONTRACT. ANY DISCREPANCIES ARE TO BE REFERRED BEFORE PROCEEDING WITH THE WORK.
2. DIMENSIONS ARE NOT TO BE OBTAINED BY SCALING UP STRUCTURAL DRAWINGS.
3. ALL SET OUT DIMENSIONS ARE TO BE CHECKED ON SITE AND VERIFIED BEFORE CONSTRUCTION COMMENCES.
4. DURING CONSTRUCTION THE STRUCTURE SHALL BE MAINTAINED IN A STABLE CONDITION AND NO PART SHALL BE OVERSTRESSED.
5. ALL WORKMANSHIP, MATERIALS AND DESIGN SHALL BE IN ACCORDANCE WITH THE APPROPRIATE STANDARDS, AND BY LAWS AND ORDINANCES OF THE RELEVANT BUILDING AUTHORITY AND THE BUILDING CODE OF AUSTRALIA ALL CODES SHALL BE THE CURRENT EDITION.
6. SUBSTITUTION FOR SPECIFIED ITEMS, MATERIALS ETC MUST BE APPROVED BY FORCE10 BEFORE USE.
7. ANY CONFLICT BETWEEN THESE NOTES AND THE SPECIFICATION OF THESE DRAWINGS SHALL BE RESOLVED BY FORCE10.
8. ANY DESIGN OR CONSTRUCTION ISSUES RELATING TO THE FORCE10 BUILDING SYSTEM AND PRODUCTS SHALL BE REFERRED TO FORCE10 INTERNATIONAL FOR RESOLUTION.
9. FORCE10 INTERNATIONAL SHALL BE RESPONSIBLE FOR THE DESIGN AND CERTIFICATION FOR THE FORCE 10 BUILDING SYSTEM.
10. THESE DETAILS TO BE READ IN CONJUNCTION WITH FORCE10 DESIGN AND CONSTRUCTION MANUAL.
11. FITTINGS AND FIXTURES – ALL FITTINGS, FIXTURES ETC ARE DESIGNED FOR PURPOSE AND ARE USED TO CONNECT THE FORCE10 SYSTEM AND ARE PROVIDED WITH THE FORCE10 KIT. ALL SCREWS USED ARE BUILDDEX CLASS 3 OR CLASS 4.

DESIGN CRITERIA

THE STRUCTURAL WORK SHOWN IN THESE DRAWINGS HAS BEEN DESIGNED FOR THE FOLLOWING IMPOSED LOADS UNLESS NOTED OTHERWISE:

- FLOOR 3.0 kPa
- ROOF 0.25 kPa

* FURTHER IMPOSED LOADS CAN BE ACHIEVED BY DESIGN ENGINEER FOR DETAILS BASED ON DESIGN MANUAL.

ULTIMATE RACKING VALUE	kN		
PANEL HEIGHTS (mm)	2435	2700	3000
WP1=WA1,WB1 CONSECUTIVE PANELS FIXED TO BEARER/SLAB	4.37	4.37	3.9
WP2=WA2,WB2 SINGLE PANEL FIXED TO BEARER/SLAB	4.37	4.37	3.9
WP3=WA3,WB3 PANELS FIXED TO FLOORING ONLY	2.4	2.0	1.7

RACKING RESISTANCE

PANEL TYPE:	WP1= WA1, WB1 – WP2= WA2, WB2						
PANEL HEIGHT UP TO:	2.7m			*CONSECUTIVE PANELS FITTED TO BEARER/SLAB*			
RACKING RESISTANCE:	4.37 kN/PANEL						
LENGTH ONE STOREY BUILDING (m)	10	13.4	16.7	20	23.4	26.7	
LENGTH TWO STOREY BUILDING (m)	5.3	7	8.8	10.5	12.3	14.1	
AREA OF BUILDING FACING WIND (m ²)	30	40	50	60	70	80	
AS 4055 WIND CLASSIFICATION	DESIGN PRESSURE kPa	REQUIRED TOTAL LENGTH OF BRACING PANELS (m)					
N1	.66	5.0	6.0	8.0	9.0	11.0	12.0
N2	.92	7.0	9.0	11.0	13.0	15.0	17.0
N3,C1	1.44	10.0	13.0	17.0	20.0	23.0	26.0
N4,C2	2.14	15.0	20.0	25.0	30.0	35.0	40.0
N5,C3	3.16	NS	NS	NS	NS	NS	NS
N6,C4	4.26	NS	NS	NS	NS	NS	NS

NOTES:

1. USING AS4055, WIND PRESSURES (AND THE RESULTING LENGTHS OF BRACING) LESS THAN THOSE GIVEN HEREIN MAY BE DETERMINED.
2. THE AREA CALCULATIONS ARE BASED ON THE FOLLOWING:
 AVERAGE HEIGHT OF A SINGLE STOREY BUILDING 4.2m
 AVERAGE HEIGHT OF A TWO STOREY BUILDING 6.9m
 BASED ON WIDTH OF BUILDING BEING 9.0m AND ROOF PITCH 20°
3. IF THE REQUIRED LENGTH OF BRACING EXCEEDS THREE TIMES THE LENGTH OF THE BUILDING, ITS MOST LIKELY TO BE NOT SUITABLE (SHOWN AS NS)

RACKING RESISTANCE

PANEL TYPE:	WP1= WA1, WB1 – WP2= WA2, WB2						
PANEL HEIGHT UP TO:	3.0m			*CONSECUTIVE PANELS FITTED TO BEARER/SLAB*			
RACKING RESISTANCE:	3.9 kN/PANEL						
LENGTH ONE STOREY BUILDING (m)	9.5	12.7	15.9	19.0	22.2	25.4	
LENGTH TWO STOREY BUILDING (m)	5.0	6.7	8.3	10.0	11.7	13.3	
AREA OF BUILDING FACING WIND (m ²)	30	40	50	60	70	80	
AS 4055 WIND CLASSIFICATION	DESIGN PRESSURE kPa	REQUIRED TOTAL LENGTH OF BRACING PANELS (m)					
N1	.66	5.0	7.0	9.0	10.0	12.0	14.0
N2	.92	7.0	9.0	12.0	14.0	17.0	19.0
N3,C1	1.44	11.0	15.0	19.0	22.0	26.0	30.0
N4,C2	2.14	17.0	22.0	28.0	33.0	39.0	44.0
N5,C3	3.16	NS	NS	NS	NS	NS	NS
N6,C4	4.26	NS	NS	NS	NS	NS	NS

NOTES:

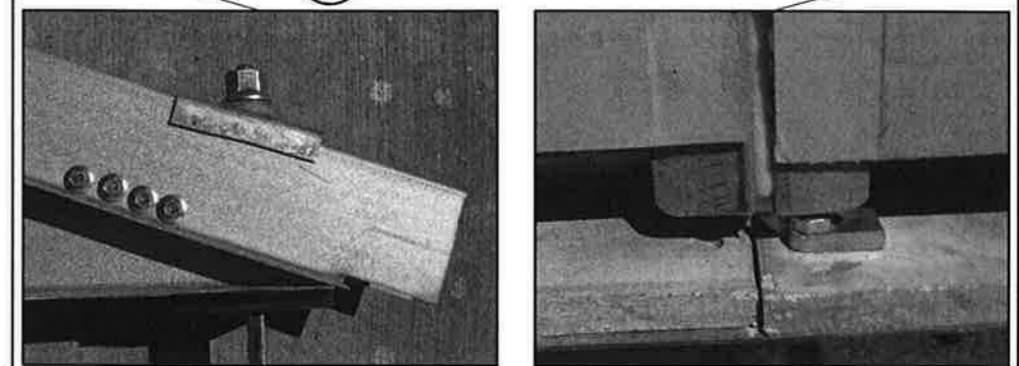
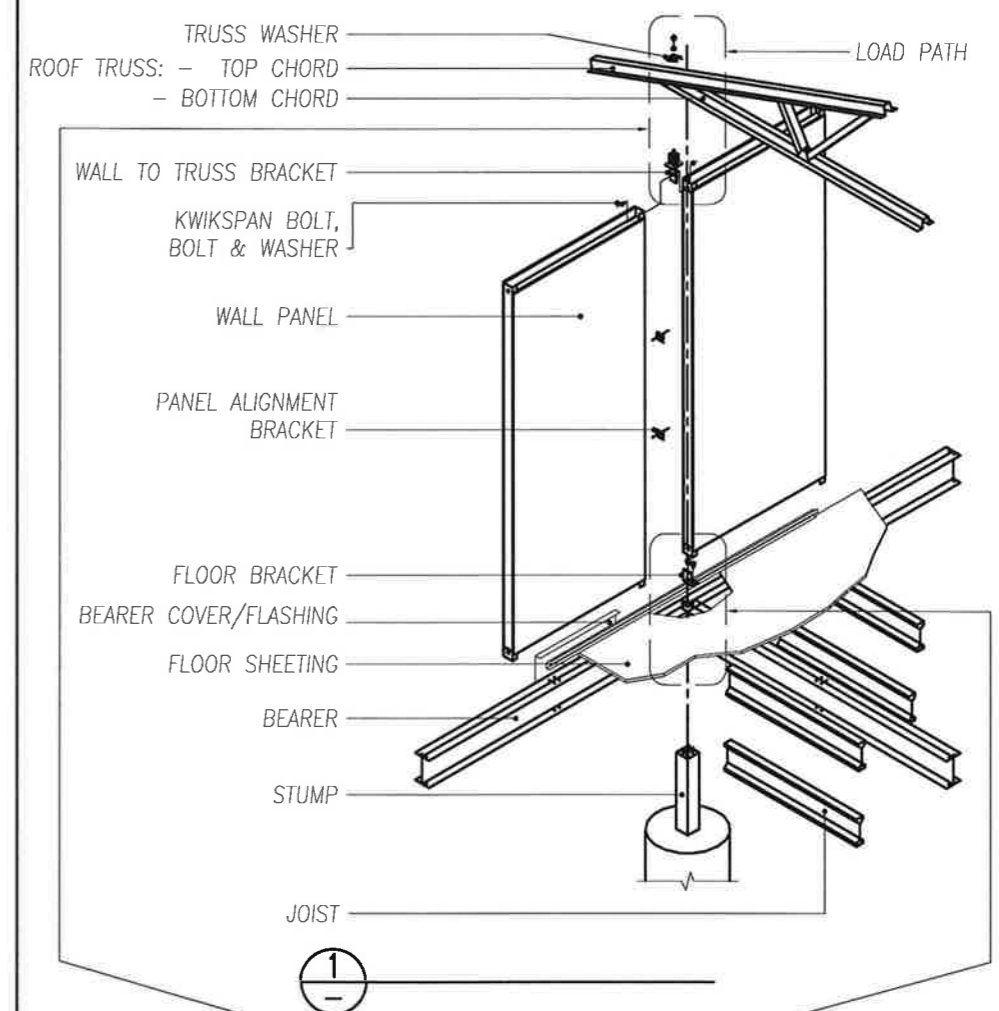
1. USING AS4055, WIND PRESSURES (AND THE RESULTING LENGTHS OF BRACING) LESS THAN THOSE GIVEN HEREIN MAY BE DETERMINED.
2. THE AREA CALCULATIONS ARE BASED ON THE FOLLOWING:
 AVERAGE HEIGHT OF A SINGLE STOREY BUILDING 4.5m
 AVERAGE HEIGHT OF A TWO STOREY BUILDING 7.2m
 BASED ON WIDTH OF BUILDING BEING 9.0m AND ROOF PITCH 20°
3. IF THE REQUIRED LENGTH OF BRACING EXCEEDS THREE TIMES THE LENGTH OF THE BUILDING, ITS MOST LIKELY TO BE NOT SUITABLE (SHOWN AS NS)

FORCE10 LAYOUT

ULTIMATE BENDING PRESSURE

PANEL HEIGHTS	PRESSURE (kPa)	ULTIMATE LIMIT STATE
2435 / 2700	3.93	70.4m/sec

* STANDARD WALL PANELS CAN BE USED UP TO AREAS WITH A WIND RATING OF UP TO C2. IN C3 & C4 AREAS SPECIFIC DESIGN IS REQUIRED BY STRUCTURAL ENGINEER



FIGURED DIMENSIONS TAKE PRECEDENCE, DO NOT SCALE FROM PLANS. IF IN DOUBT, PLEASE ASK. BUILDERS TO CHECK & VERIFY ALL INFORMATION. REPORT ANY ERRORS OR OMISSIONS. ALL WORK TO BE CARRIED OUT IN A TRADESMAN LIKE MANNER, AND IN ACCORDANCE WITH LOCAL CODES AND RELEVANT AUTHORITY REQUIREMENTS. PG ITEMS SHOWN INDICATIVE ONLY.

FORCE10
 ENGINEERED BUILDING SYSTEMS
 ... A Better Way To Build !

FORCE 10 INTERNATIONAL PTY LTD
 30 ACANTHUS STREET, DARRA
 QUEENSLAND, AUSTRALIA 4076
 PH. +61 7 37162002 FX. +61 7 37162078
 email:- info@force10international.org
 web:- http://www.force10international.org
 THE FORCE10 ENGINEERED BUILDING SYSTEM IS
 PROTECTED BY WORLDWIDE PATENTS. THIS DRAWING MAY
 NOT BE COPIED OR REPRODUCED IN PART OR WHOLE
 WITHOUT WRITTEN CONSENT FROM FORCE10 INTL. PTY LTD.

CONTENTS

PG CONTENTS PG

REV	BY	DATE	NOTES
C	DM	02-02-11	UPDATED DRAWINGS AS PER CHANGES
B	MN	26-11-10	UPDATED DRAWINGS AS PER CHANGES
A	DM	16-09-10	UPDATED DRAWINGS AS PER CHANGES

DRAWING REVISIONS

DRAWN BY : DM

DATE : 16-09-10

CHECKED : **TD**

SCALE N.T.S. @ A3

PROJECT TYPICAL COVER PAGE

TENDER # : -

DRAWING # :

JOB# : -

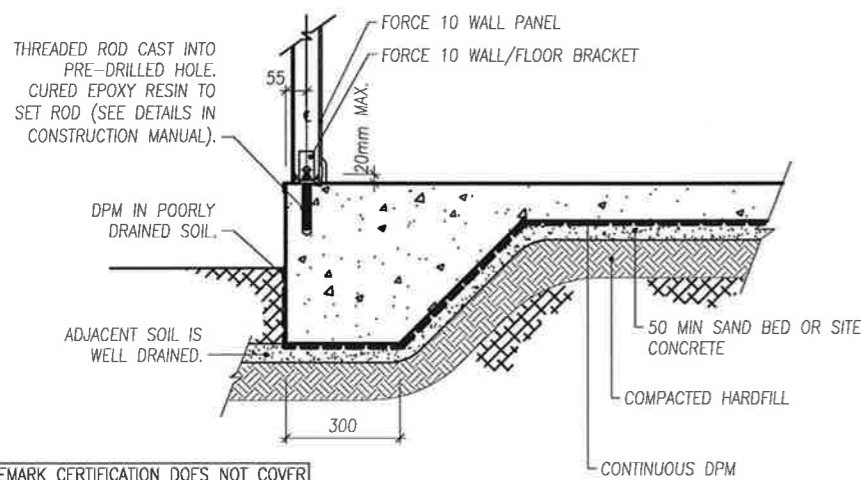
CM01-01

C

SLAB DETAILS (TYPICAL)

THERMAL PROPERTIES					
THERMAL RESISTANCE			THERMAL RESISTANCE		
	R	m ² .K/W	R	m ² .K/W	
ROOF			FLOOR		
EXTERNAL AIR FILM	0.04	0.04	INTERNAL AIR FILM	0.11	0.16
STEEL ROOF SHEET	0.00	0.00	16mm SUPABOARD	0.14	0.14
INSULBREAK R2.5	0.25	0.25	SHEETING		
REFLECTIVE CEILING SPACE	0.75	1.12	EXTERNAL AIR FILM	0.04	0.04
R3.5 SILVER BATTS CEILING INSULATION	3.50	3.50	TOTAL	0.29	0.34
10mm PLASTERBOARD	0.06	0.06			
INTERNAL AIR FILM	0.11	0.16			
TOTAL	4.71	5.13			
WALLS					
EXTERNAL AIR FILM	0.04				
EXTERNAL 6mm	0.02				
FIBRE-CEMENT SHEETING					
6.3mm POLYURETHANE	3.00				
INTERNAL 6mm	0.02				
FIBRE-CEMENT SHEETING					
INTERNAL AIR FILM	0.12				
TOTAL	3.20				

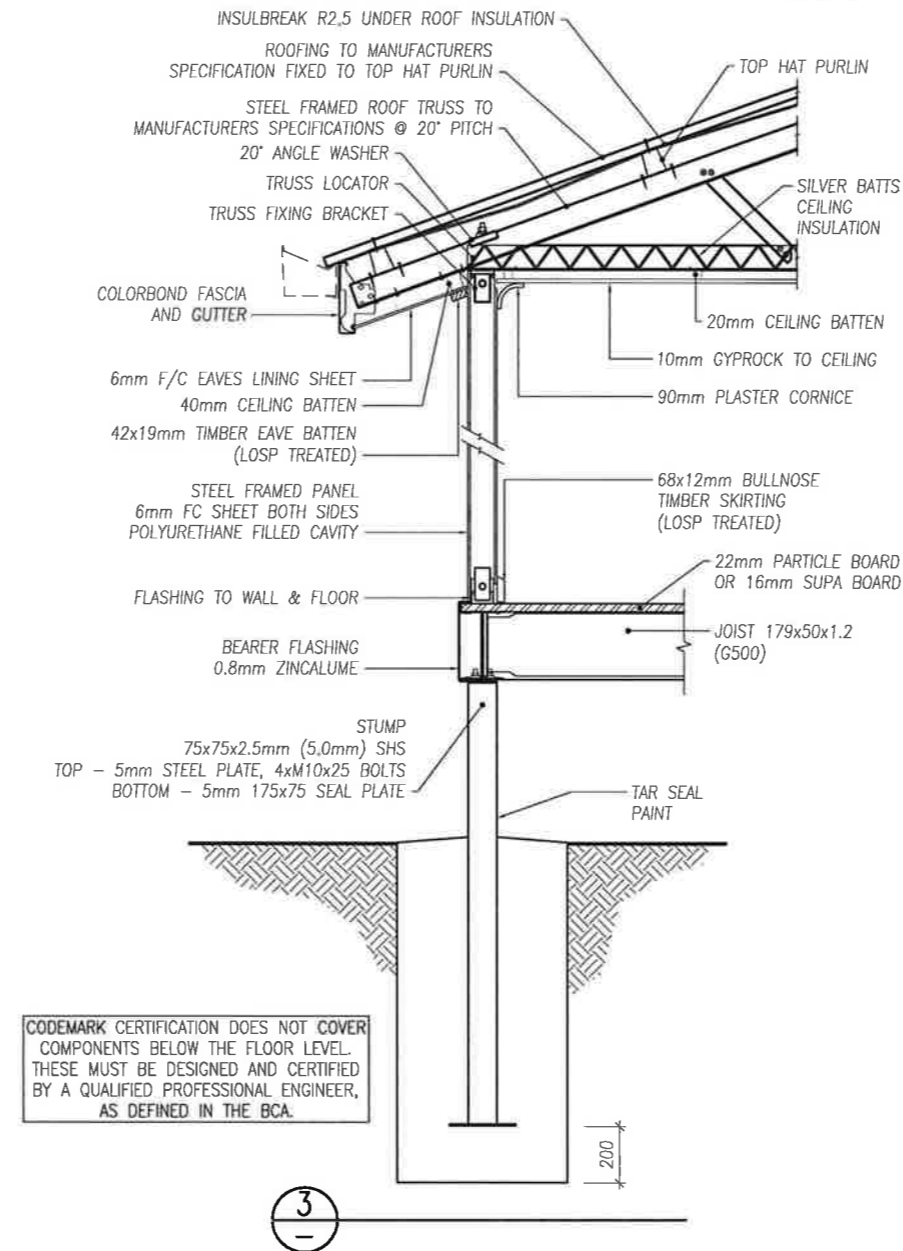
CONCRETE SLAB-ON-GROUND CONSTRUCTION, BEAMS AND THE ASSOCIATED DETAILS SHALL BE DETERMINED BY THE STRUCTURAL ENGINEER, BASED ON:
 -AS 2870;
 -A SITE CLASSIFICATION BASED ON SOIL TESTS FOR EACH PARTICULAR SITE; AND
 -THE FOLLOWING DETAILS



CODEMARK CERTIFICATION DOES NOT COVER COMPONENTS BELOW THE FLOOR LEVEL. THESE MUST BE DESIGNED AND CERTIFIED BY A QUALIFIED PROFESSIONAL ENGINEER, AS DEFINED IN THE BCA.

2

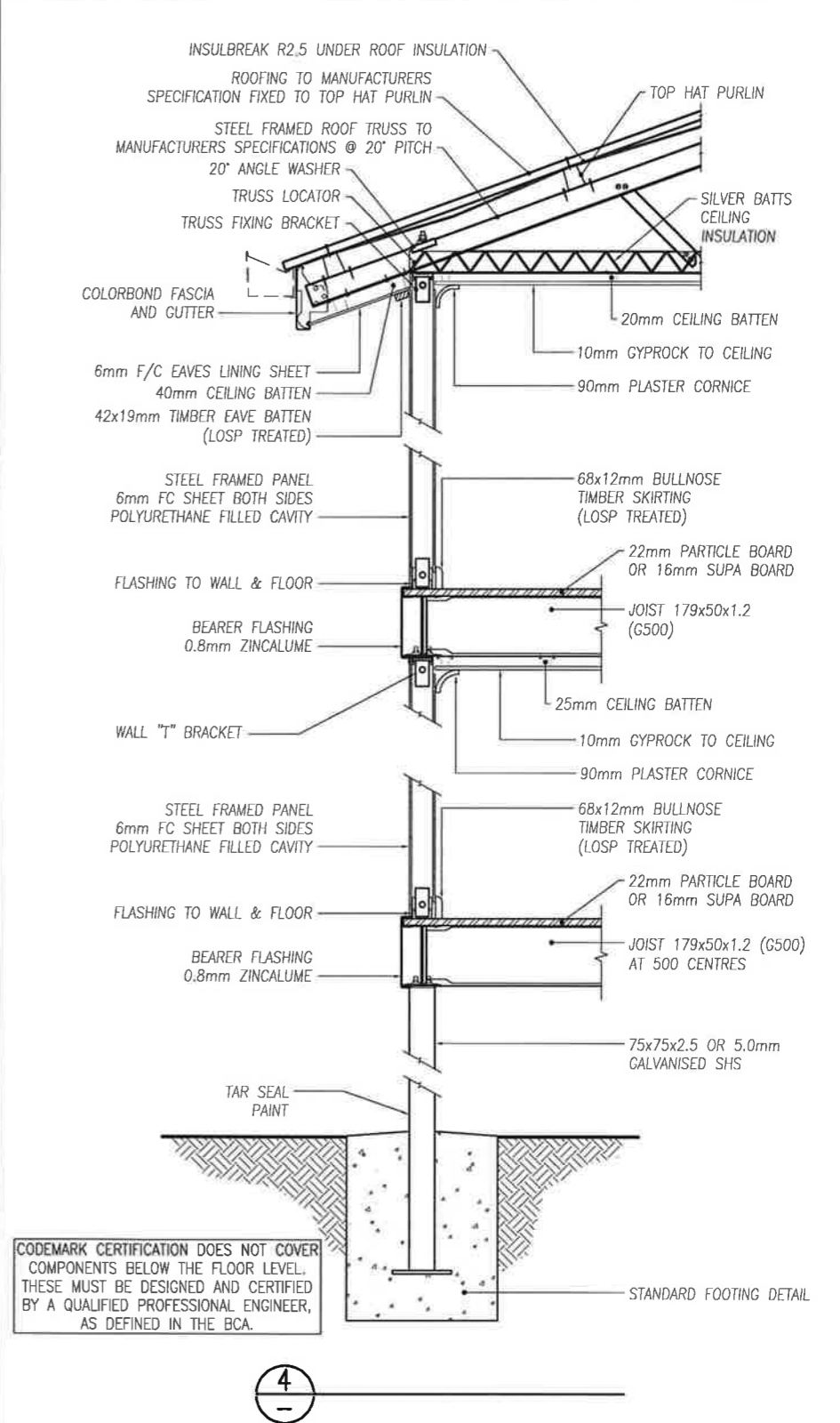
SINGLE STOREY SECTION



CODEMARK CERTIFICATION DOES NOT COVER COMPONENTS BELOW THE FLOOR LEVEL. THESE MUST BE DESIGNED AND CERTIFIED BY A QUALIFIED PROFESSIONAL ENGINEER, AS DEFINED IN THE BCA.

3

2 STOREY SECTION



CODEMARK CERTIFICATION DOES NOT COVER COMPONENTS BELOW THE FLOOR LEVEL. THESE MUST BE DESIGNED AND CERTIFIED BY A QUALIFIED PROFESSIONAL ENGINEER, AS DEFINED IN THE BCA.

4

FIGURED DIMENSIONS TAKE PRECEDENCE, DO NOT SCALE FROM PLANS. IF IN DOUBT, PLEASE ASK. BUILDERS TO CHECK & VERIFY ALL INFORMATION. REPORT ANY ERRORS OR OMISSIONS. ALL WORK TO BE CARRIED OUT IN A TRADESMAN LIKE MANNER, AND IN ACCORDANCE WITH LOCAL CODES AND RELEVANT AUTHORITY REQUIREMENTS. PG ITEMS SHOWN INDICATIVE ONLY.

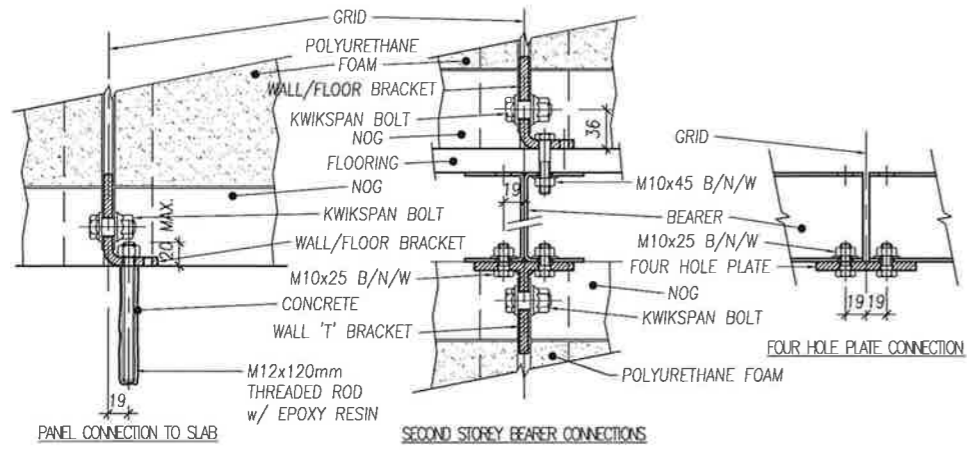


FORCE 10 INTERNATIONAL PTY LTD
 30 ACANTHUS STREET, DARRA
 QUEENSLAND, AUSTRALIA 4076
 PH. +61 7 37162002 FX. +61 7 37162078
 email:- info@force10international.org
 web:- http://www.force10international.org
 THE FORCE10 ENGINEERED BUILDING SYSTEM IS
 PROTECTED BY WORLDWIDE PATENTS. THIS DRAWING MAY
 NOT BE COPIED OR REPRODUCED IN PART OR WHOLE
 WITHOUT WRITTEN CONSENT FROM FORCE10 INTL. PTY LTD.

CONTENTS	PG	CONTENTS	PG
C	DM	02-02-11	UPDATED DRAWINGS AS PER CHANGES
B	MN	25-11-10	UPDATED DRAWINGS AS PER CHANGES
A	DM	16-09-10	UPDATED DRAWINGS AS PER CHANGES
REV	BY	DATE	NOTES
DRAWING REVISIONS			

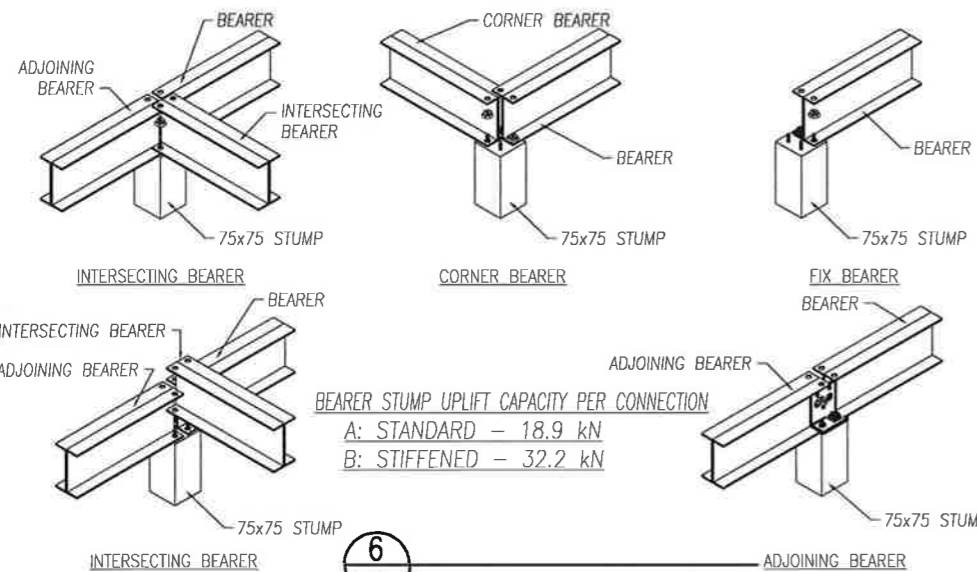
DRAWN BY : DM	PROJECT	TYPICAL COVER PAGE
DATE : 02-02-11		
CHECKED : TD	TENDER # : -	JOB# : -
SCALE N.T.S. @ A3	DRAWING # :	CM01-02

FLOOR SYSTEM

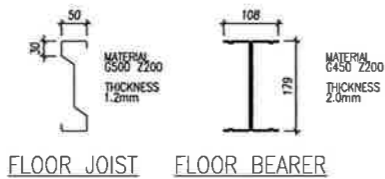


UPLIFT CAPACITY - 20.0 kN UPLIFT CAPACITY - 38.4 kN/PER CONNECTION

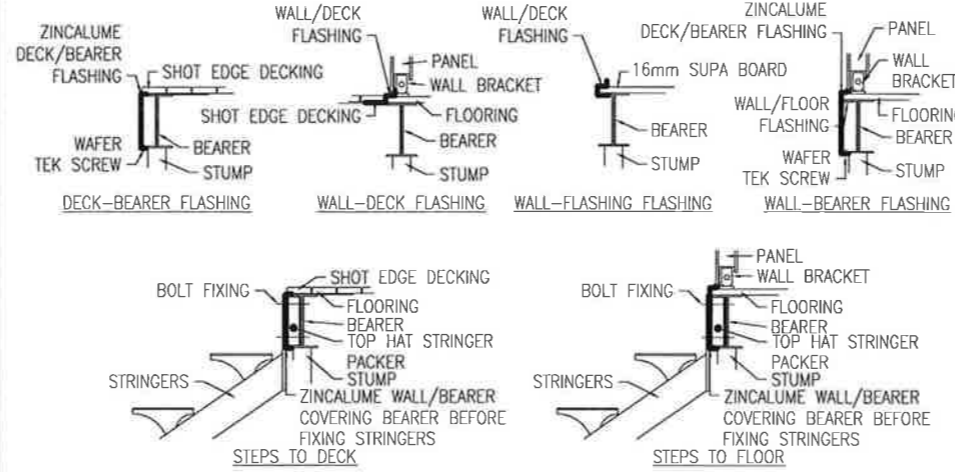
5



6

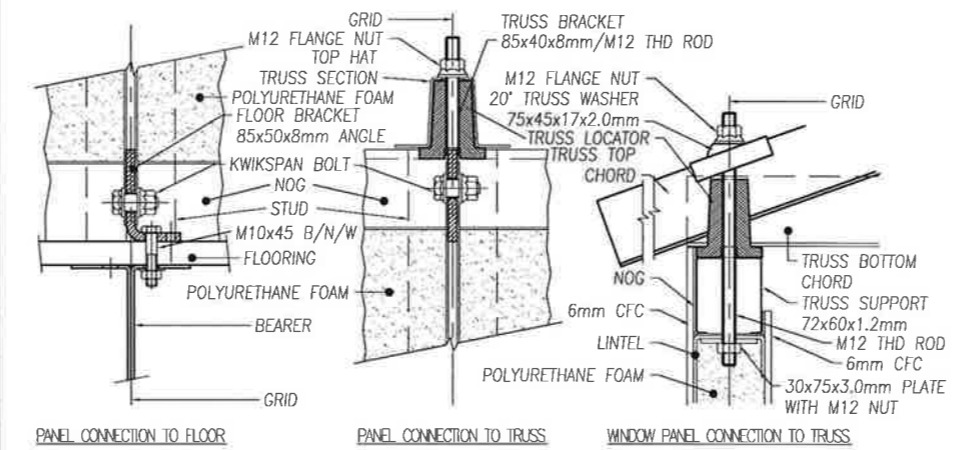


MEMBER	THICKNESS mm	SPACING mm	ALLOWABLE SPAN mm
JOIST	1.2	500	3000
BEARER (SINGLE SPAN)	2.0	2000	3000
BEARER (DOUBLE SPAN)	2.0	3000	3000



7

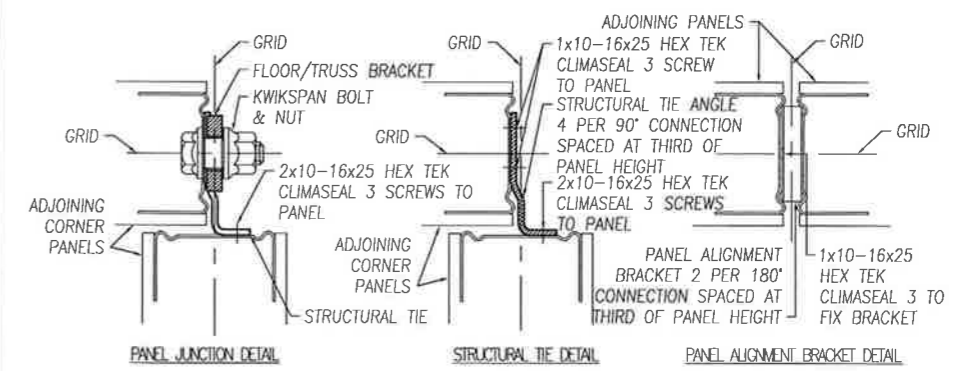
FIXING DETAILS



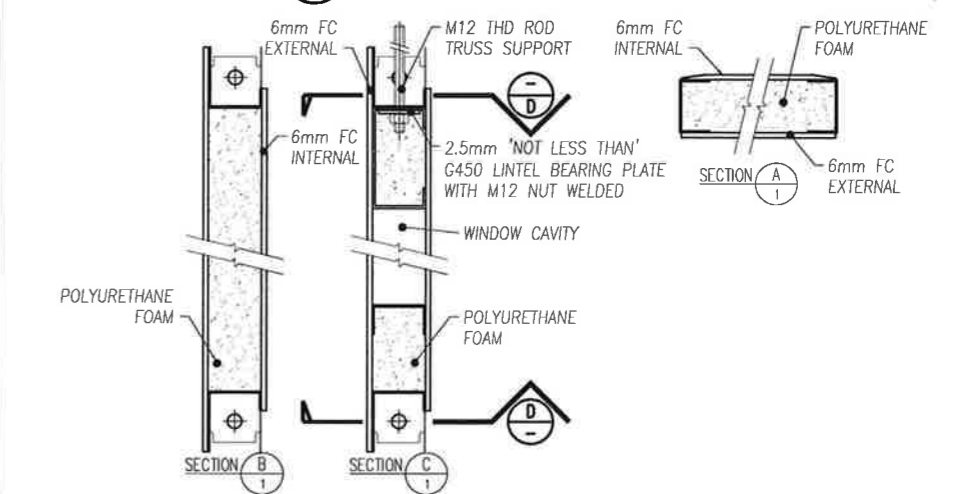
UPLIFT CAPACITY - FLOOR - 38.4 kN - TRUSS - 20.0 kN

8

AS 4055 WIND CLASSIFICATION	UPLIFT PRESSURE kPa	UPLIFT FORCE FLOOR kN	UPLIFT FORCE TRUSS kN	DETAILS
N1	0.7	38.4	20.0	PANEL CONNECTION TO SLAB AS SHOWN IN SECTION 6 PANEL CONNECTION TO TRUSS AS SHOWN IN SECTION 10
N2	1.0	38.4	20.0	PANEL CONNECTION TO SLAB AS SHOWN IN SECTION 6 PANEL CONNECTION TO TRUSS AS SHOWN IN SECTION 10
N3	1.5	38.4	20.0	PANEL CONNECTION TO SLAB AS SHOWN IN SECTION 6 PANEL CONNECTION TO TRUSS AS SHOWN IN SECTION 10
N4	2.2	38.4	20.0	PANEL CONNECTION TO SLAB AS SHOWN IN SECTION 6 PANEL CONNECTION TO TRUSS AS SHOWN IN SECTION 10
N5	3.3	38.4	20.0	PANEL CONNECTION TO SLAB AS SHOWN IN SECTION 6 PANEL CONNECTION TO TRUSS AS SHOWN IN SECTION 10
N6	4.4	38.4	20.0	PANEL CONNECTION TO SLAB AS SHOWN IN SECTION 6 PANEL CONNECTION TO TRUSS AS SHOWN IN SECTION 10
C1	2.0	38.4	20.0	PANEL CONNECTION TO SLAB AS SHOWN IN SECTION 6 PANEL CONNECTION TO TRUSS AS SHOWN IN SECTION 10
C2	3.0	38.4	20.0	PANEL CONNECTION TO SLAB AS SHOWN IN SECTION 6 PANEL CONNECTION TO TRUSS AS SHOWN IN SECTION 10
C3	4.4	38.4	20.0	PANEL CONNECTION TO SLAB AS SHOWN IN SECTION 6 PANEL CONNECTION TO TRUSS AS SHOWN IN SECTION 10
C4	6.0	38.4	20.0	PANEL CONNECTION TO SLAB AS SHOWN IN SECTION 6 PANEL CONNECTION TO TRUSS AS SHOWN IN SECTION 10



9



10

FIGURED DIMENSIONS TAKE PRECEDENCE, DO NOT SCALE FROM PLANS. IF IN DOUBT, PLEASE ASK. BUILDERS TO CHECK & VERIFY ALL INFORMATION. REPORT ANY ERRORS OR OMISSIONS. ALL WORK TO BE CARRIED OUT IN A TRADESMAN LIKE MANNER, AND IN ACCORDANCE WITH LOCAL CODES AND RELEVANT AUTHORITY REQUIREMENTS. PG ITEMS SHOWN INDICATIVE ONLY.



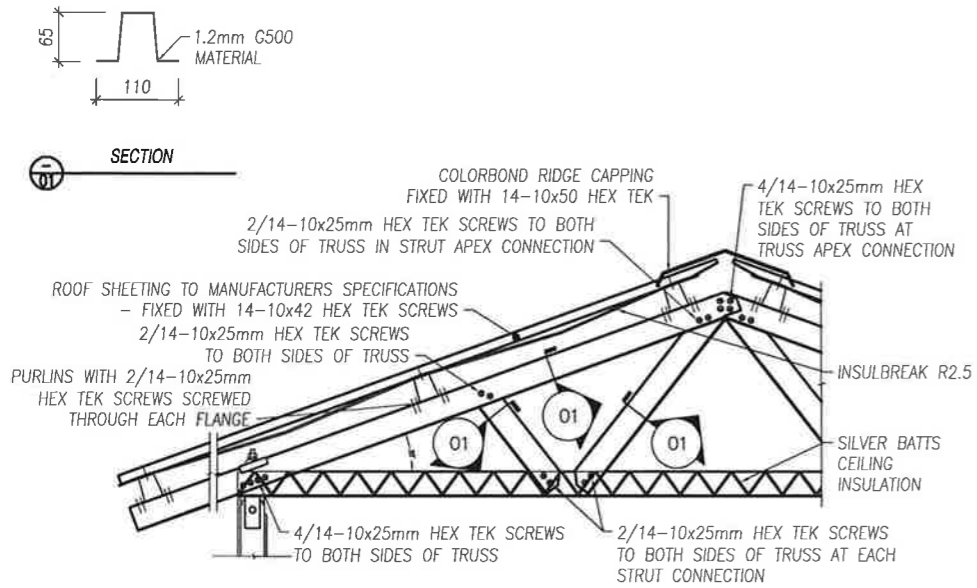
FORCE 10 INTERNATIONAL PTY LTD
 30 ACANTHUS STREET, DARRA QUEENSLAND, AUSTRALIA 4076
 PH. +61 7 37162002 FX. +61 7 37162078
 email:- info@force10international.org
 web:- http://www.force10international.org
 THE FORCE10 ENGINEERED BUILDING SYSTEM IS PROTECTED BY WORLDWIDE PATENTS. THIS DRAWING MAY NOT BE COPIED OR REPRODUCED IN PART OR WHOLE WITHOUT WRITTEN CONSENT FROM FORCE10 INTL. PTY LTD.

REV	BY	DATE	NOTES
C	DM	02-02-11	UPDATED DRAWINGS AS PER CHANGES
B	MN	26-11-10	UPDATED DRAWINGS AS PER CHANGES
A	DM	16-09-10	UPDATED DRAWINGS AS PER CHANGES

DRAWING REVISIONS

DRAWN BY : DM	PROJECT TYPICAL COVER PAGE
DATE : 16-09-10	
CHECKED : TD	TENDER # : -
SCALE N.T.S. @ A3	JOB# : -
DRAWING # : CM01-03	

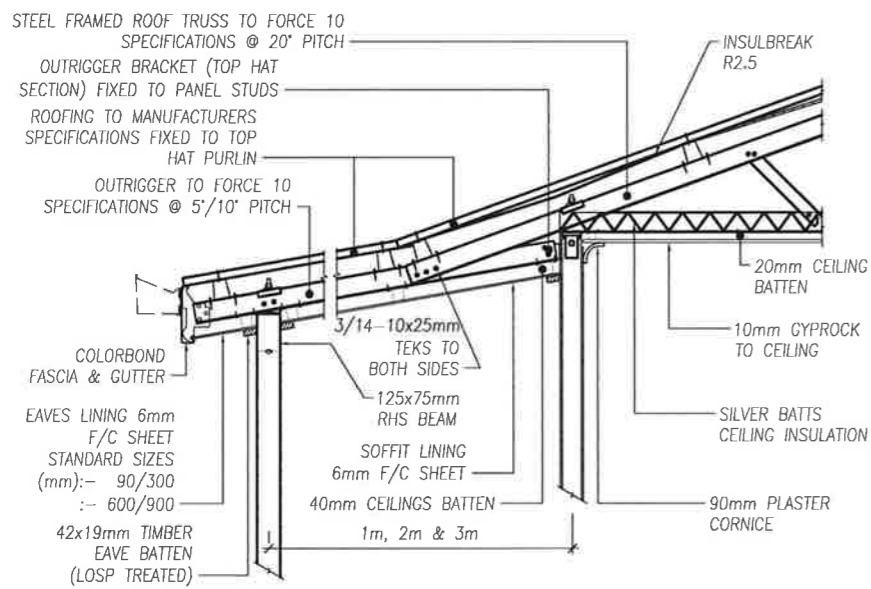
PURLINS AND ROOF SHEETING FIXING



11

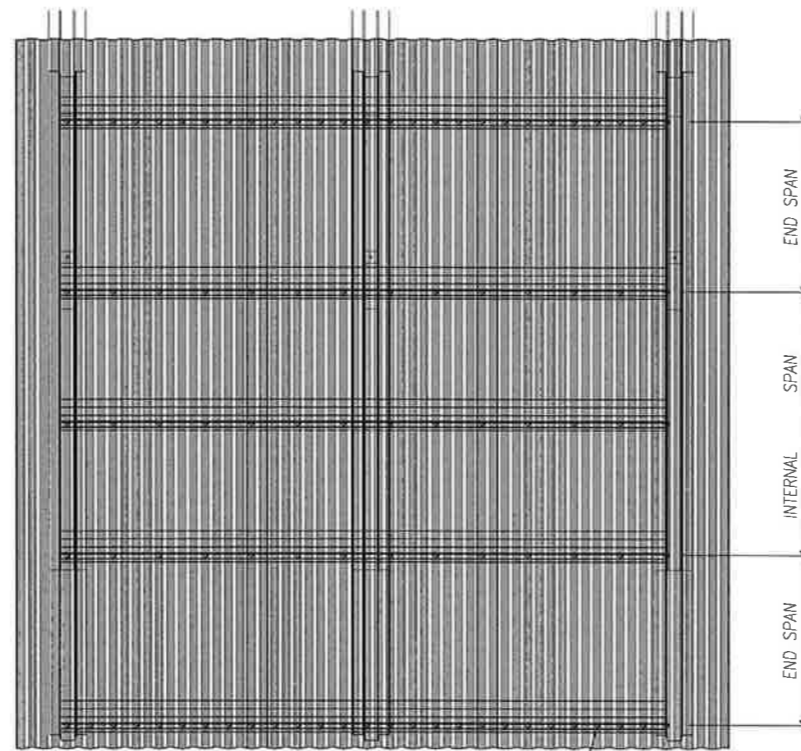
MAXIMUM TRUSS SPAN FOR WIND LOADINGS				
N1 - N3	N4 - N5	C1 - C2	C3	C4
16 MOD	12 MOD	12 MOD	11 MOD	8 MOD
MOD IS 1 METRE SPAN				

* FURTHER CAPACITY CAN BE ACHIEVED BY DESIGN OF STRUCTURAL ENGINEER



12

PURLINS AND ROOF SHEETING FIXING



10x50 HEX TEK SCREWS (WITHOUT CYCLONE WASHER), USED ON TOP AND BOTTOM PURLIN ON EVERY RIDGE OF THE ROOF SHEETING AND PURLINS IN BETWEEN SCREW ON EVERY SECOND RIDGE OF THE ROOF SHEETING

* CYCLONE WASHERS FOR C3 & ABOVE. SEE TABLE BELOW

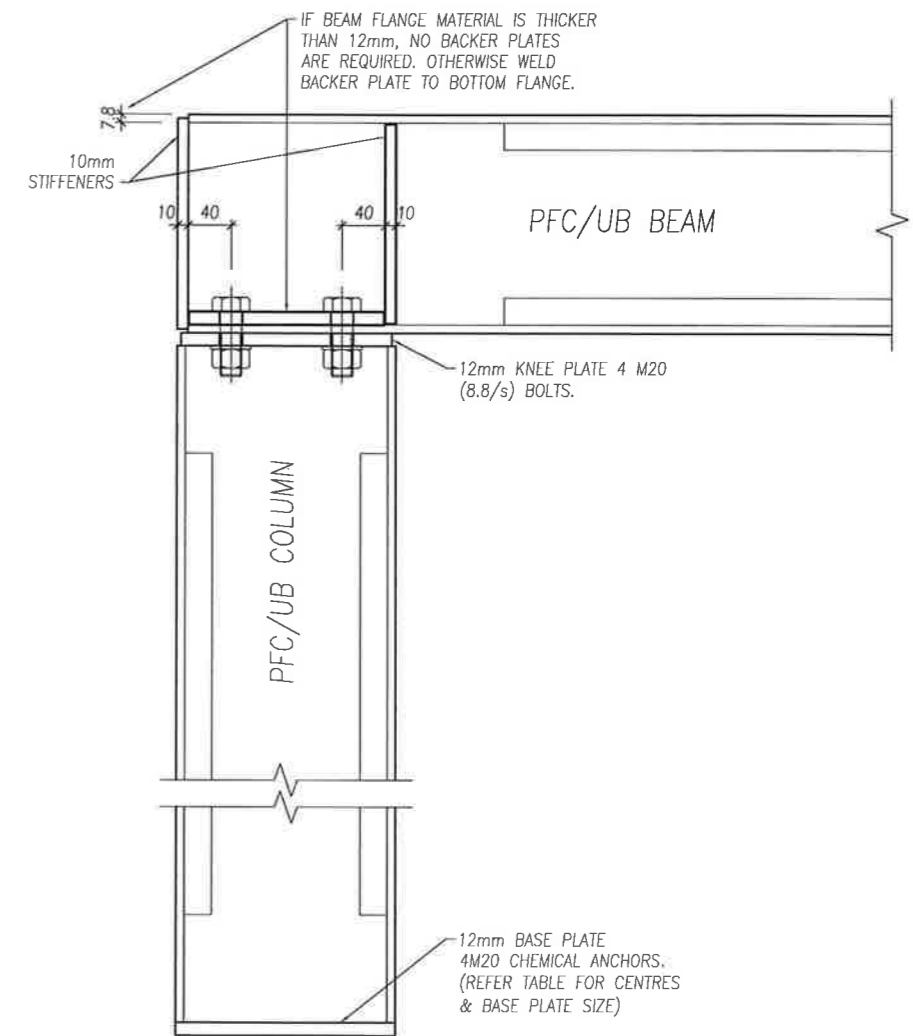
13 **ROOF CLADDING FIXING
DETAIL (CYCLONE AREAS)**

ROOF CLADDING	BMT.	SPAN TYPE	N3/C1/ W41C	C2/ W50C	C3/ W60C	C4/ W70C	NUMBER OF SCREWS PER SHEET W/O WASHERS
CUSTOM ORB	0.48	END INT	1050 1200	800 900	600 750	WASHERS/480 WASHERS/600	5
MONOCLAD	0.48	END INT	750 1200	500 750	WASHERS/720 WASHERS/900	WASHERS/480 WASHERS/600	4
LONG SPAN	0.48	END INT	800 1200	450 750	WASHERS/720 WASHERS/900	WASHERS/480 WASHERS/600	4

* INFORMATION FROM: LYSAGHT CYCLONIC AREA DESIGN MANUAL. 05/09

* EXCLUDES NORTHERN TERRITORY AREAS.

* FOR NON CYCLONIC AREAS REFER RELEVANT CLAUSES OF CURRENT BCA (FIG 3.5.1.5. BCA 2010)



NOTE:

A. PORTAL BRACING MAY BE USED IN LIEU OF SHS POSTS AND DIAGONAL BRACING.

B. RACKING FORCE INDICATES THE RACKING RESISTANCE OF EACH PORTAL FRAME CONSISTING OF TWO COLUMNS AND A BEAM.

PORTAL BRACING VALUES				
MEMBER	RACKING FORCE	BASE PLATE	BASE PL BOLTS CTS	KNEE PLATE
180PFC	21.9 kN	180x75x12t	90 CTS	173x75x12t
200PFC	25.4 kN	200x75x12t	110 CTS	193x75x12t
230PFC	30.6 kN	230x75x12t	140 CTS	223x75x12t
200UB25	25.4 kN	203x12t	140x80 CTS	196x130x12t
250UB31	34.3 kN	252x12t	170x80 CTS	245x145x12t
310UB40	45.2 kN	304x12t	200x100 CTS	297x165x12t
360UB45	54.8 kN	352x12t	200x100 CTS	345x170x12t
410UB54	64.0 kN	403x12t	300x90 CTS	396x180x12t

14

FIGURED DIMENSIONS TAKE PRECEDENCE, DO NOT SCALE FROM PLANS. IF IN DOUBT, PLEASE ASK. BUILDERS TO CHECK & VERIFY ALL INFORMATION. REPORT ANY ERRORS OR OMISSIONS. ALL WORK TO BE CARRIED OUT IN A TRADESMAN LIKE MANNER, AND IN ACCORDANCE WITH LOCAL CODES AND RELEVANT AUTHORITY REQUIREMENTS. PC ITEMS SHOWN INDICATIVE ONLY.

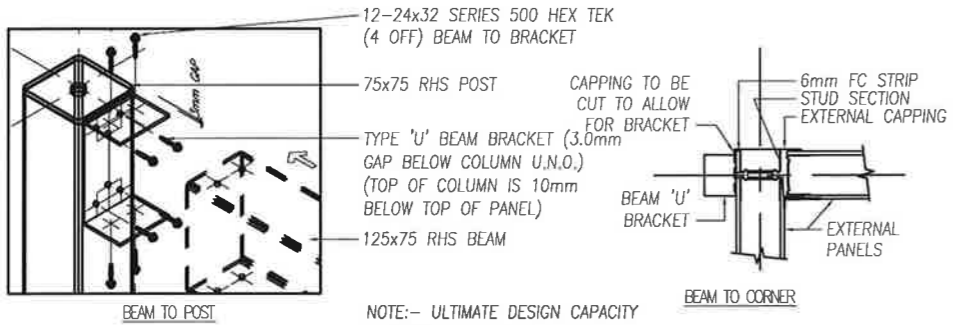


FORCE 10 INTERNATIONAL PTY LTD
 30 ACANTHUS STREET, DARRA
 QUEENSLAND, AUSTRALIA 4076
 PH. +61 7 37162002 FX. +61 7 37162078
 email:- info@force10international.org
 web:- http://www.force10international.org
 THE FORCE10 ENGINEERED BUILDING SYSTEM IS
 PROTECTED BY WORLDWIDE PATENTS. THIS DRAWING MAY
 NOT BE COPIED OR REPRODUCED IN PART OR WHOLE
 WITHOUT WRITTEN CONSENT FROM FORCE10 INTL. PTY LTD.

CONTENTS	PG	CONTENTS	PG
-	-	-	-
C	DM	02-02-11	UPDATED DRAWINGS AS PER CHANGES
B	MN	26-11-10	UPDATED DRAWINGS AS PER CHANGES
A	DM	16-09-10	UPDATED DRAWINGS AS PER CHANGES
REV	BY	DATE	NOTES
DRAWING REVISIONS			

DRAWN BY : DM	PROJECT TYPICAL COVER PAGE
DATE : 16-09-10	-
CHECKED : TD	TENDER # : -
SCALE N.T.S. @ A3	JOB# : -
DRAWING # :	CM01-04

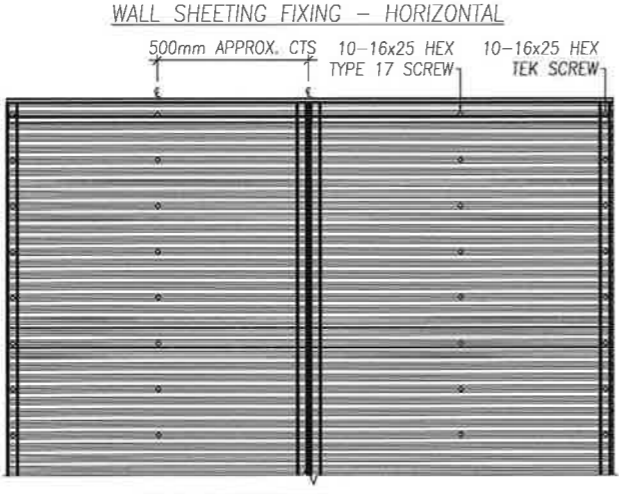
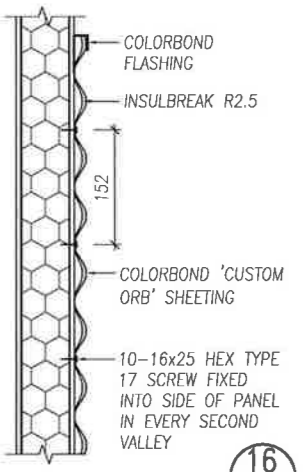
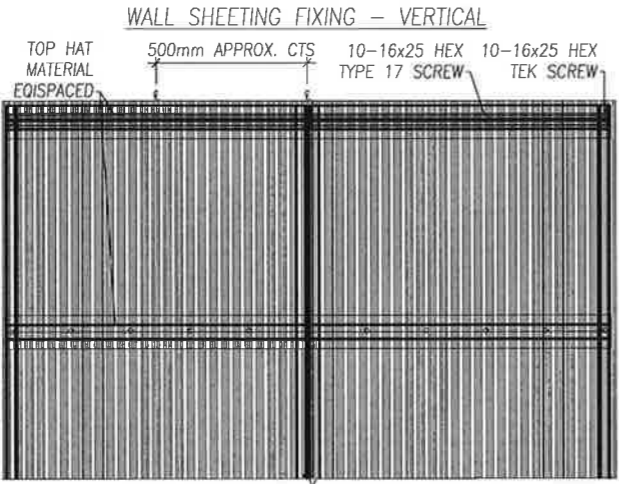
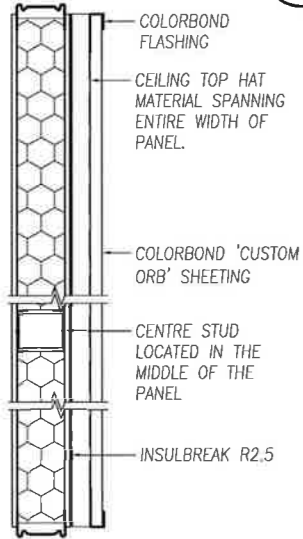
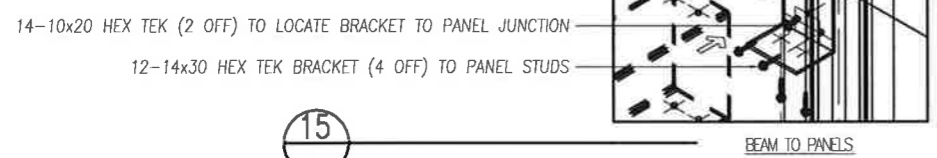
COLUMN FIXING



NOTE:- ULTIMATE DESIGN CAPACITY - 30 kN (COMBINED)

* FURTHER CAPACITY CAN BE ACHIEVED BY DESIGN OF STRUCTURAL ENGINEER.

NOTE :- DIMENSION 'Z'
 FOR CONNECTION TO ROOF ABOVE : 'Z' = 13mm (U.N.O.)
 FOR CONNECTION TO FLOOR ABOVE : 'Z' = 3mm (U.N.O.)



FIGURED DIMENSIONS TAKE PREFFERENCE, DO NOT SCALE FROM PLANS. IF IN DOUBT, PLEASE ASK BUILDERS TO CHECK & VERIFY ALL INFORMATION. REPORT ANY ERRORS OR OMISSIONS. ALL WORK TO BE CARRIED OUT IN A TRADESMAN LIKE MANNER, AND IN ACCORDANCE WITH LOCAL CODES AND RELEVANT AUTHORITY REQUIREMENTS. PG ITEMS SHOWN INDICATIVE ONLY.



FORCE 10 INTERNATIONAL PTY LTD
 30 ACANTHUS STREET, DARRA
 QUEENSLAND, AUSTRALIA 4076
 PH. +61 7 37162002 FX. +61 7 37162078
 email:- info@force10international.org
 web:- <http://www.force10international.org>
 THE FORCE10 ENGINEERED BUILDING SYSTEM IS
 PROTECTED BY WORLDWIDE PATENTS. THIS DRAWING MAY
 NOT BE COPIED OR REPRODUCED IN PART OR WHOLE
 WITHOUT WRITTEN CONSENT FROM FORCE10 INTL. PTY LTD.

REV	BY	DATE	NOTES
C	DM	02-02-11	UPDATED DRAWINGS AS PER CHANGES
B	MN	26-11-10	UPDATED DRAWINGS AS PER CHANGES
A	DM	16-09-10	UPDATED DRAWINGS AS PER CHANGES
DRAWING REVISIONS			

DRAWN BY : DM	PROJECT TYPICAL COVER PAGE
DATE : 16-09-10	-
CHECKED : TD	TENDER # : -
SCALE N.T.S.@ A3	JOB# : -
DRAWING # : CM01-05	C