

FLOOR PLAN

FORCE10
 "BUILDING SOLUTIONS FOR THE WORLD"
 QUALITY APPROVED TO AS/NZS ISO9001

FORCE 10 INTERNATIONAL PTY LTD
 30 ACANTHUS STREET, DARRA
 QUEENSLAND, AUSTRALIA 4076
 PH. +61 7 37162002 FX. +61 7 37162078
 email: - info@force10international.org
 web: - http://www.force10international.org

THE FORCE 10 ENGINEERED BUILDING SYSTEM IS PROTECTED BY WORKING
 PATENTS. THIS DRAWING MAY NOT BE COPIED OR REPRODUCED IN PART
 OR WHOLE WITHOUT WRITTEN CONSENT FROM FORCE 10 INTL. PTY LTD.

CONTENTS	PG	CONTENTS	PG
FLOOR PLAN	01		
ELEVATION 182	02		
ELEVATION 384	03		

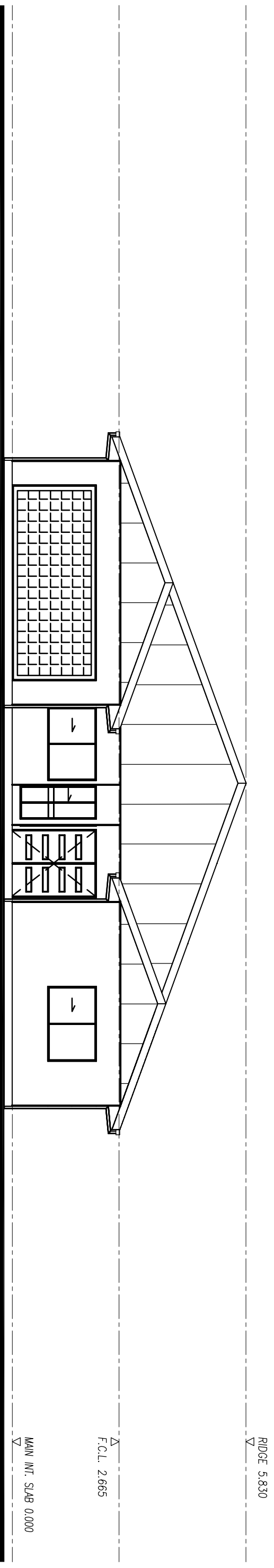
REV	BY	DATE	DRAWING REVISIONS
A	KS	24-10-07	

DRAWN BY : KS	PROJECT : THE EXUMA
DATE : 24-10-07	TENDER # : T
CHECKED :	JOB# : -
SCALE : 1:100 @ A3	DRAWING # : EXUMA-01

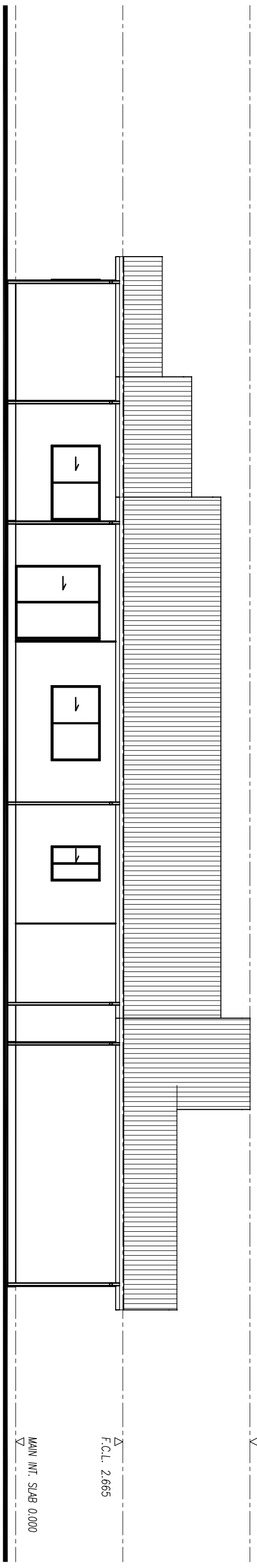
SCALE : 1:100 @ A3	
--------------------	--

DRAWN BY : KS	PROJECT : THE EXUMA
DATE : 24-10-07	TENDER # : T
CHECKED :	JOB# : -
SCALE : 1:100 @ A3	DRAWING # : EXUMA-01

A



2
01
ELEVATION



1
01
ELEVATION

CONTENTS	PG	CONTENTS	PG
FLOOR PLAN	01		
ELEVATION 1&2	02		
ELEVATION 3&4	03		

FORCE10TM

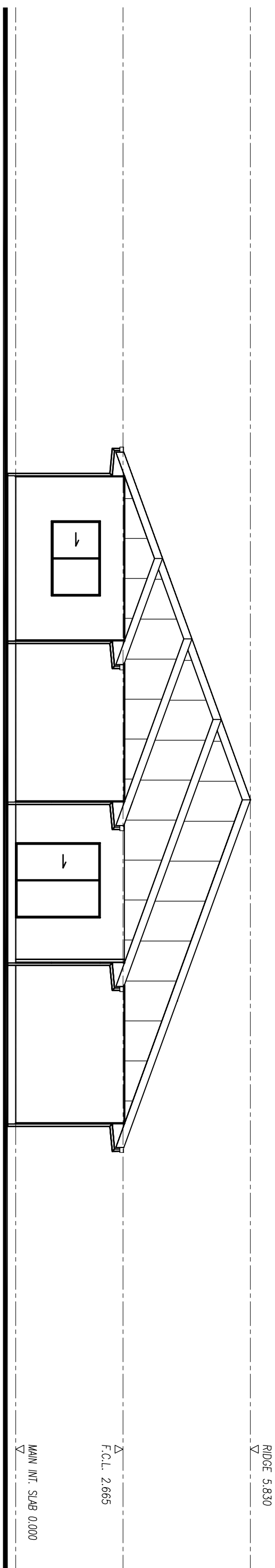
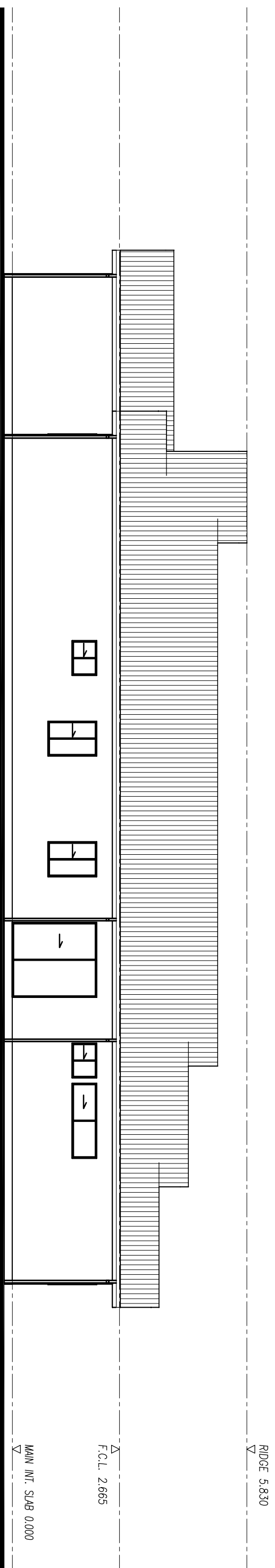
"BUILDING SOLUTIONS FOR THE WORLD"
QUALITY APPROVED TO AS/NZS ISO9001

FORCE 10 INTERNATIONAL PTY LTD
30 ACANTHUS STREET, DARRA
QUEENSLAND, AUSTRALIA 4076
PH. +61 7 37162002 FX. +61 7 37162078
emdl:- info@force10international.org
web:- <http://www.force10international.org>

THE FORCE 10 ENGINEERED BUILDING SYSTEM IS PROTECTED BY WORLD-
WIDE PATENTS. THIS DRAWING MAY NOT BE COPIED OR REPRODUCED
IN PART OR WHOLE WITHOUT WRITTEN CONSENT FROM FORCE 10.

REV	BY	DATE	DRAWING REVISIONS
A	KS	24-10-07	

DRAWN BY :	KS	PROJECT	THE EXUMA
DATE :	24-10-07	TENDER # :	T
CHECKED :		JOB# :	-
SCALE :	1:100	DRAWING # :	EXUMA-02



4
01
ELEVATION

CONTENTS	PG	CONTENTS	PG
FLOOR PLAN	01		
ELEVATION 1&2	02		
ELEVATION 3&4	03		

FORCE10TM

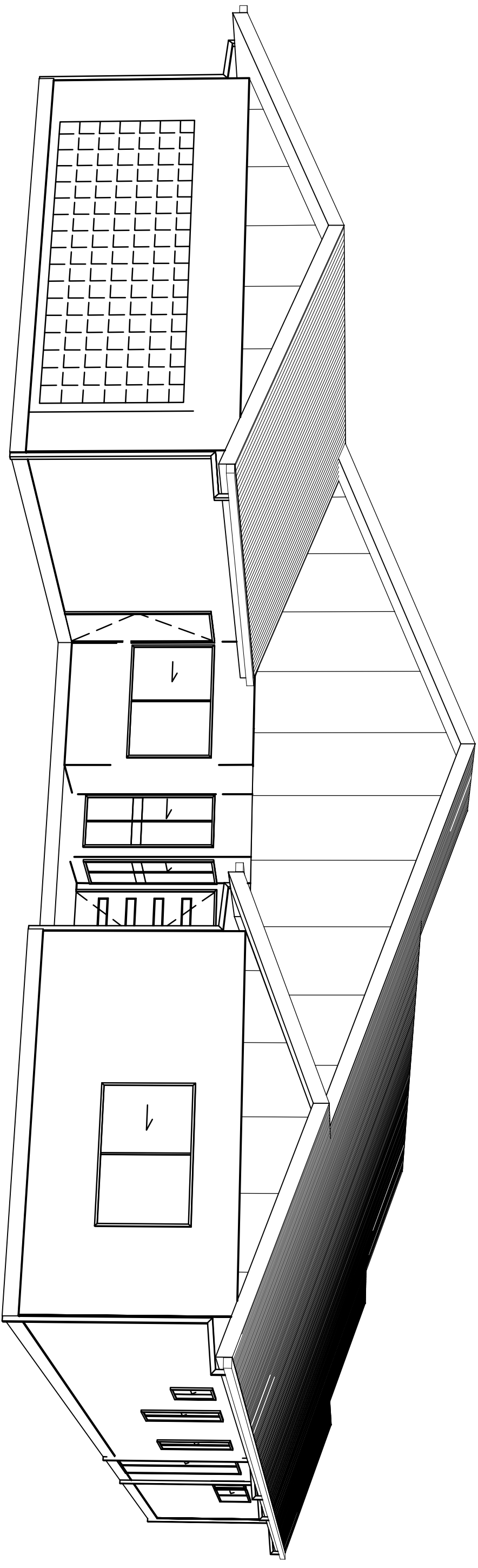
"BUILDING SOLUTIONS FOR THE WORLD"
QUALITY APPROVED TO AS/NZS ISO9001

FORCE 10 INTERNATIONAL PTY LTD
30 ACANTHUS STREET, DARRA
QUEENSLAND, AUSTRALIA 4076
PH. +61 7 37162002 FX. +61 7 37162078
emdl:- info@force10international.org
web:- http://www.force10international.org

THE FORCE 10 ENGINEERED BUILDING SYSTEM IS PROTECTED BY WORLD-
WIDE PATENTS. THIS DRAWING MAY NOT BE COPIED OR REPRODUCED
IN PART OR WHOLE WITHOUT WRITTEN CONSENT FROM FORCE 10.

DRAWN BY : KS		PROJECT THE EXUMA	
DATE : 24-10-07		-	
CHECKED :		TENDER # :	T
SCALE : 1:100		JOB# :	-
DRAWING # : EXUMA-03		A	

REV	BY	DATE	DRAWING REVISIONS
A	KS	24-10-07	



○ PERSPECTIVE

FORCE 10 INTERNATIONAL PTY LTD
 30 ACANTHUS STREET, DARRA
 QUEENSLAND, AUSTRALIA 4076
 PH. +61 7 37162002 FX. +61 7 37162078
 email: - info@force10international.org
 web: - http://www.force10international.org

THE FORCE 10 ENGINEERED BUILDING SYSTEM IS PROTECTED BY PATENT RIGHTS. THIS DRAWING MAY NOT BE COPIED OR REPRODUCED IN PART OR WHOLE WITHOUT WRITTEN CONSENT FROM FORCE 10 INTL PTY LTD.

FORCE 10
 "BUILDING SOLUTIONS FOR THE WORLD"
 QUALITY APPROVED TO AS/NZS ISO9001

CONTENTS
 FLOOR PLAN
 ELEVATION 1&2
 ELEVATION 3&4

PG 01
 02
 03

CONTENTS

PG

DRAWN BY : KS

DATE : 24-10-07

CHECKED :

SCALE : n.t.s. @ A3

PROJECT THE EXUMA

-

TENDER # : T

DRAWING # : EXUMA-XX

JOB# : -

A

REV	BY	DATE	DRAWING REVISIONS
A	KS	24-10-07	